

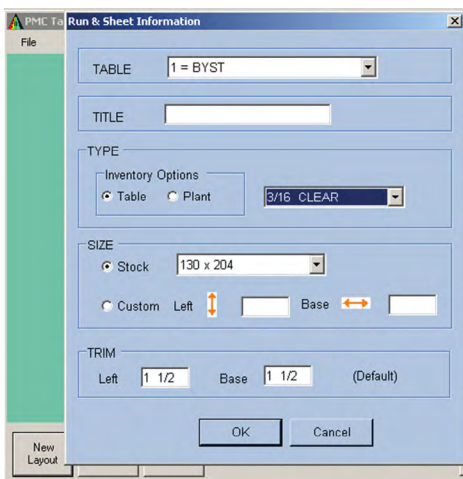
TABLEMATE⁷

Manual Glass Layout Creation



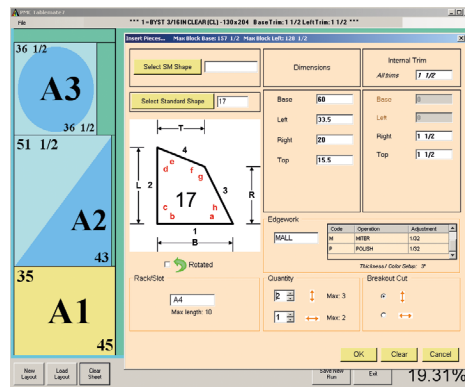
TABLEMATE⁷ is a software tool that assists in the manual creation of a glass cutting layout. TABLEMATE⁷ makes it extremely easy to manually generate cutting layouts composed of rectangles or shapes. TABLEMATE⁷ provides total flexibility in creating layouts for cutting emergency orders, remakes, and other low volume requirements. This versatile and intuitive tool allows its user to construct a cutting layout, piece by piece, with a pictorial representation of the cutting layout displayed on a computer screen during each step of its creation. TABLEMATE⁷ allows you to plan your pattern on any size sheet you choose to use.

Begin by selecting virgin stock from the inventory specific to your cutting table or enter the dimensions of usable offal (remnants).



You then place your first piece. Strips (subplates) are created automatically based on the dimensions of the first piece entered in the scrap area. Add, copy, paste or delete pieces or strips as needed, with the pictorial layout updated as you go along. Pieces or strips can be duplicated horizontally or vertically on the sheet with just two mouse-clicks. The maximum per-

mitted size of a piece, based on the available unused area, is shown on the Insert Piece entry screen. By adding a racking assignment, remakes can easily get back into production sequence.



In addition to rectangles, TABLEMATE⁷ can generate pieces based on any of OPTIMATE™'s standard library shapes or SHAPEMATE™'s custom library of your own DXF files.

Add edgework or trim to one or multiple sides and the piece's cutting dimensions will be automatically adjusted for you.

Pieces can be entered by 6-digit PMC License Plate, by Order/Item/Component, or by entering dimensions. Entry by scanning of barcodes is also an option.

Load your TABLEMATE⁷ layout immediately into PMC Software's SCOREMATE™ or save and use when needed.

TABLEMATE⁷-created layouts AND regular optimized layouts can be loaded into TABLEMATE⁷, modified by adding or removing pieces, resized onto a larger or smaller sheet, and then saved.

TABLEMATE⁷ is easy to understand and use. The user is presented with menus, used to select a task to be performed or for data entry. Explicit instructions are given and data verification is performed on-line and occurs immediately.

Maximum efficiency

- Drop-downs to select inventory available for each specific cutting table
- Drop-downs to select standard or DXF shapes
- Automatic display of appropriate trim, edgework, and table-home position parameters
- Automatic calculation of piece cutting-size when edgework is needed
- Lower-yield layouts can be resized onto smaller stock or remnant
- Complete piece entry by 6-digit License Plate eliminates cutting errors and speeds up layout creation
- Trackable usage of glass inventory
- Speedy creation of immediately-required layouts

Cost savings

- Better virgin glass usage
- Offal utilized for cutting layouts

Superior flexibility

- Expedites emergency orders or remakes
- Complete control of piece selection, placement, and breakout

Ease of use

- Pictorial representation of cutting layout
- Screen prompts simplify data entry
- Data verification prevents invalid data



10275 West Higgins Road · Suite 250
Rosemont, IL 60018
(908) 806-7824 · pmcsoftware.com